

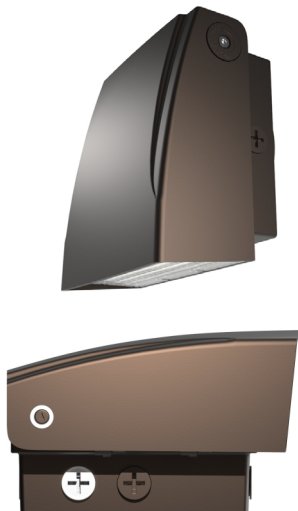


Project :

Type :

Part#:

## LED Wall Pack



P/N: **INS-LWP10B-80W-abcdef**

### Note:

INS = Company name

LWP10B= Product series

80W= Rating Power

D1=Driver manufacturer,DAERMAY

JY=LED manufacturer,Bridgelux 3030

H8=light distribution type

D= Color Tunable

A1 = Version number

"a" can be any two letters for lamp colors

"b" can be "P" for DC Photocontrol or blank for not provided.

"c" can be "M", "DP" for DC Motion sensor, DC PIR sensor or blank for not provided.

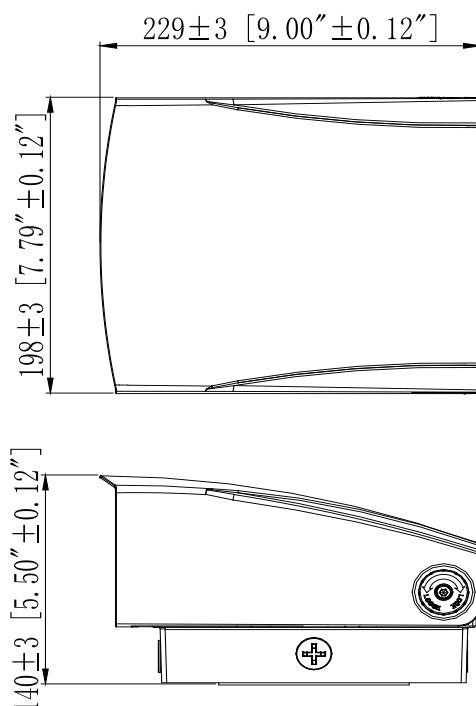
"d" can be "10SP" "20SP" for Surge-Protective Device or blank for not provided

"W" can be wattage adjustable.

"f" can be any digits for CCT,30/40/50=3000K/4000K/5000K

"g" can be "F" or blank for DC Sensor Power Driver provided or not.

## DIMENSIONS



## ADVANTAGE

- UL cUL DLC5.1 premium certificate.
- Bridgelux Chip, high CRI.
- Input voltage 120-277VAC.
- Output constant current lever can be adjusted through output cable with 0-10V.
- No UV or IR in the beam.
- Easy to install and operate.
- Energy saving, long lifespan.
- Light is soft and uniform, safe to eyes.
- Instant start, NO flickering, NO humming.
- Green and eco-friendly without mercury.

## APPLICATION

- Entrance lighting, courtyard lighting.
- Industrial lighting, Outdoor landscape lighting.
- Building, The hotel.

## LED Wall Pack

### SPECIFICATIONS

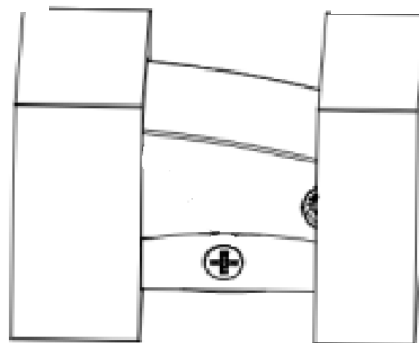
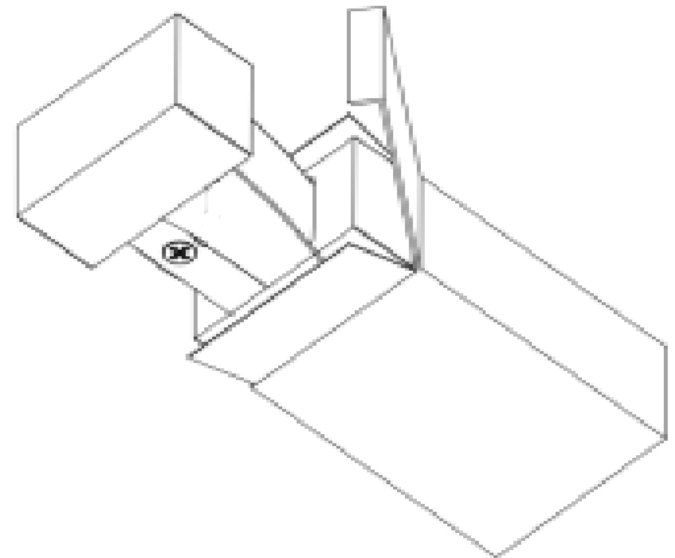
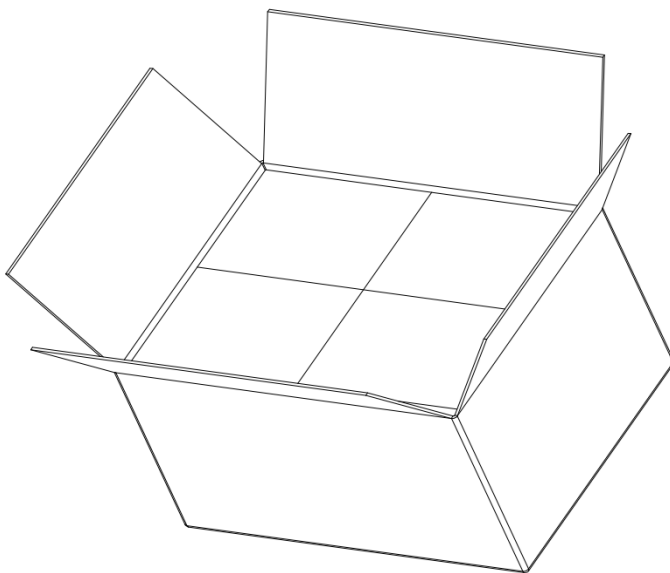
<b>OPTICAL</b>	Input Power (Tolerance : ±10%)	80W(Wattage adjustable range 25%-100%)		
	Color Temperature(Color Tunable)	3000K	4000K	5000K
	Lumen (Tolerance : ±10%)	9600LM	10800LM	10000LM
	Efficacy (Tolerance :±3%)	120LM/W	135LM/W	125LM/W
	CRI	>70		
	Color Consistency	<7 Steps (or <7 SDCM)		
	BUG	B3-U2-G1		
	Distribution Pattern	PC Lens		
	Beam Angle (50%) (Tolerance : ±15%)	100*80 Degree		
<b>ELECTRICAL</b>	Input Voltage and Frequency	120-277VAC, 50/60Hz		
	PF (Tolerance : -3%)	≥0.9		
	THD (Tolerance : +5%)	≤20%		
	Flicker Percent	<70%		
	Driver Brand	ASMART		
	Driver Model	MP-080TGI30A		
	Driver Surge protection	L/N- PE: 6kV, L-N: 6kV		
	Dimming	0-10V dimming standard		
	Sensor Type	Occupancy Sensor		
	Optional Accessory	Photocontrol, Surge-protective Device, Motion Sensor, Auxiliary		
<b>MATERIALS</b>	LED Brand	Bridgelux		
	LED Type	SMD3030		
	LED QTY	100*2 PCS		
	Housing	Die-cast aluminum		
	Housing Color	Brown, Black, or Customized		
	Waterproof Rating	WET (IP65)		
<b>OTHERS</b>	Operating Temperature	Without Motion Sensor: -40°C TO 50°C; With Motion Sensor: -25°C TO 50°C		
	Storage Temperature	-40°C TO 80°C		
	Operating Humidity	20%- 90% RH		
	Storage Humidity	10% - 95% RH		
	Warranty	5 years		

## LED Wall Pack

### PACKAGE

	Carton Size	Qty / Carton	Net Weight / Carton	Gross Weight / Carton
Outer box	509*274*396 mm [20.04*10.79*15.50 inch]	4PCS	10.1 KG [22.22 LBS]	10.9 KG [23.98 LBS]
Inner box	259*247*188 mm [10.20*9.72*7.40 inch]	1 PC	2.2 KG [4.84 LBS]	2.52 KG [5.54 LBS]

Tolerance of Carton Size:  $\pm 15$  MM, Tolerance of Weight:  $\pm 10\%$ .



## LED Wall Pack

### LIGHT DISTRIBUTION TESTING PARAMETERS

## Luminaire Property

Luminaire Manufacturer:  
 Luminaire Category:  
 Lamp Catalog:  
 Number of Lamps:  
 Luminous Length (mm):  
 Luminous Height (mm):  
 Current: 0.673 A  
 Power Factor: 0.995

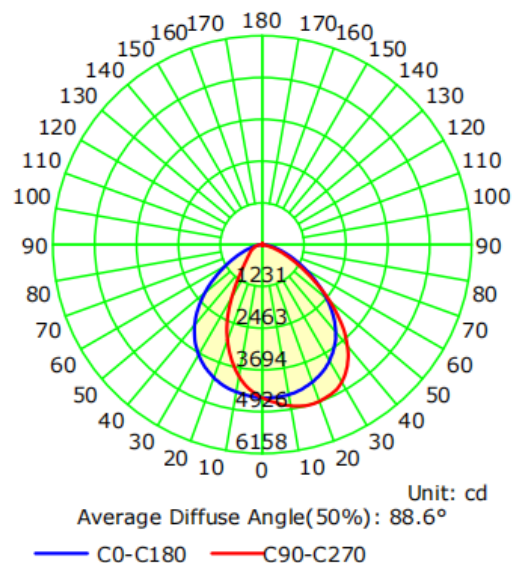
Luminaire Description:  
 Lamp Description:  
 Lumens per Lamp:  
 Luminous Width (mm):  
 Voltage: 120.0 V  
 Power: 80.35 W

## Photometric Results

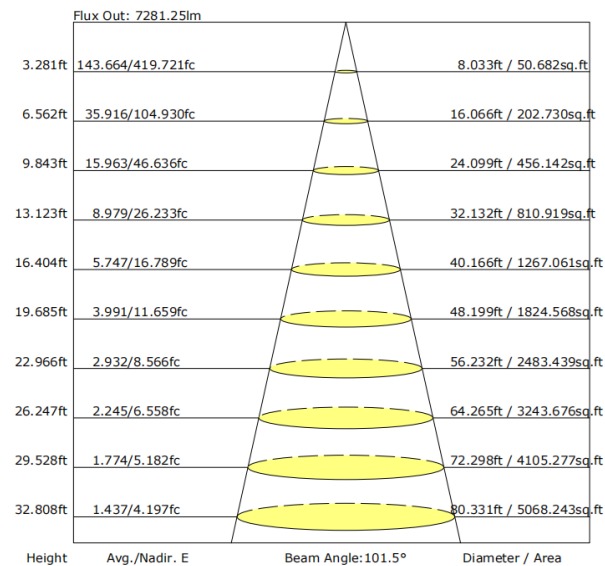
IES Classification: Type II  
 Total Rated Lamp Lumens: 9811.7 lm  
 Efficiency: 100%  
 Upward Ratio: 0%  
 C0r0 Intensity: 4517.84 cd  
 Pos of Max. Intensity: H90 V18

Longitudinal Classification: Very Short  
 Measurement Flux: 9811.7 lm  
 Downward Ratio: 100%  
 Luminaire Efficacy Rating (LER): 122.16  
 Max. Intensity: 4926.64 cd

Luminous Intensity Distribution Curve



The Average Illuminance Effective Figure



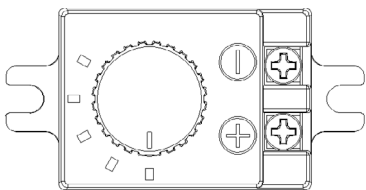
## LED Wall Pack

### NOTICE FOR USER

- Please turn off power before install or change assembly parts.
- The input voltage and lamps should be matched, after connecting the power line, Please make sure the wiring section is insulated.
- No-professionals, must not install and disassemble the lamps.

### TROUBLE SHOOTINGS

Troubles	Check points
Flickering of the light	Turn off the power and turn on again in 3 minutes. If same phenomena occur, then call agencies.
Out of working	Please check the connection.



### Wattage adjustable instruction

Turn the wattage adjustable knob to a certain wattage gear, the power of the lamp will change to the corresponding wattage.

Wattage adjustable range 25%-100%.

**Note:** Please turn off the power before adjusting the wattage.