

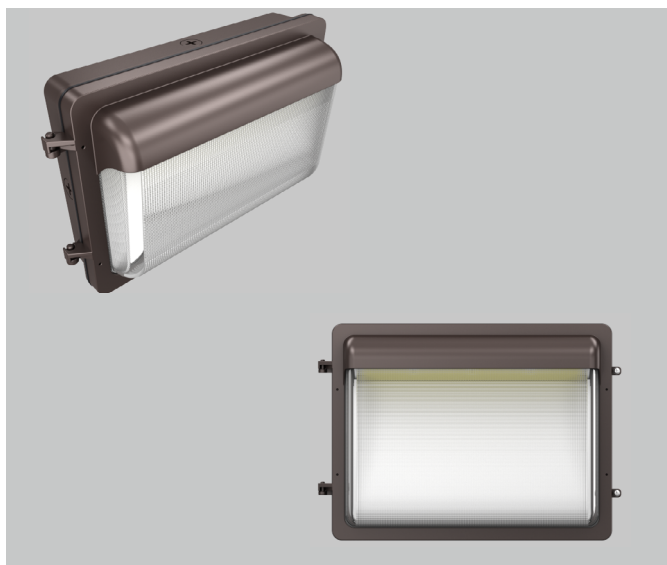


Project :

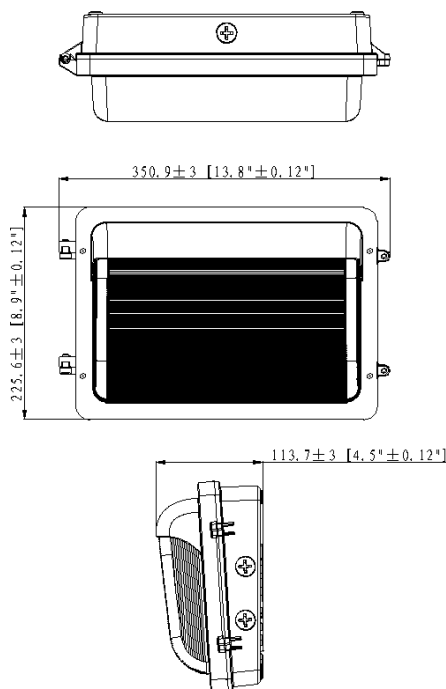
Type :

Part#:

## LED Semi-Cutoff Wall Pack



### DIMENSIONS



**INS-LWP90A-100NXYZA1-abcdefg**

### Note

INS=Company Name;  
LWP90A=Product series,LED Semi-cutoff Wall Pack;  
M=Product size,medium;  
80=Rating Power;  
B=Driver Brand, BECKY Driver;  
B=LED manufacturer,Lumileds 2835;  
SG=stripe glass;  
D=Color tunable;  
C1=Version number,120-347VAC;  
"a" can be any two letters to represent lamp colors;  
"b" can be "S" or blank for Surge-Protective Device provided or not;  
"c" can be "M", "R" or blank for sensor function provided or not;  
"d" can be any digits for CCT;  
"W" for wattage adjustable;

### ADVANTAGE

- UL, cUL DLC certificate
- Lumileds 2835, high CRI.
- Input voltage 120-347VAC .
- Output constant current lever can be adjusted through output cable with 0-10V.
- No UV or IR in the beam.
- Easy to install and operate.
- Energy saving, long lifespan.
- Light is soft and uniform, safe to eyes.
- Instant start, NO flickering, NO humming.
- Green and eco-friendly without mercury.

### APPLICATION

- Entrance lighting,courtyard lighting;
- Industrial lighting,Outdoor landscape lighting;
- Building,The hotel;
- Wall lighting area and so on.

## LED Semi-Cutoff Wall Pack

### SPECIFICATIONS

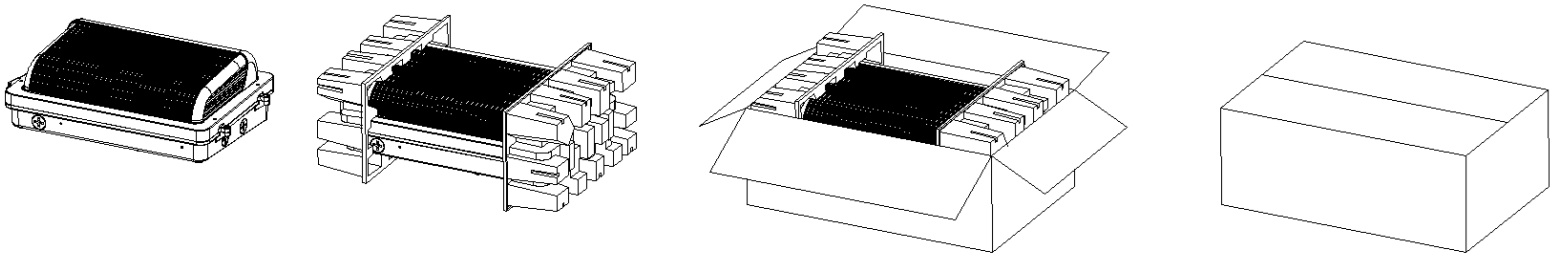
<b>OPTICAL</b>	Input Power (Tolerance : ±10%)	80W (Wattage adjustable 25%-100%)		
	Color Temperature (Color Tunable)	3000K	4000K	5000K
	Lumen (Tolerance :±10%)	10320 LM	11120 LM	10640 LM
	Efficacy (Tolerance :±3%)	129 LM/W	139 LM/W	133 LM/W
	CRI	>80		
	Color Consistency	<7 Steps (or <7 SDCM)		
	BUG	BI-U3-G4		
	Diffuser Type	stripe glass		
	Beam Angle (50%) (Tolerance : ±15%)	100 Degree		
<b>ELECTRICAL</b>	Input Voltage and Frequency	120-347VAC 50/60Hz		
	PF (Tolerance : -3%)	≥0.9		
	THD (Tolerance : +5%)	≤20%		
	Flicker Percent	<5%		
	Driver Brand	BECKY		
	Driver Model	BQE80D-260-PVF-AUX		
	Driver Surge protection	L/N-PE: 6kV, L-N: 4kV		
	Dimming	0-10V dimming standard		
	Sensor Type	Occupancy Sensor		
	Optional Accessory	Surge-protective Device, Photocontroller, Motion Sensor, PIR Sensor		
<b>MATERIALS</b>	LED Type	SMD 2835		
	LED QTY	240PCS*2		
	Housing	128PCS		
	Housing Color	Die-cast aluminum		
	Waterproof Rating	Brown, Black, or Customized		
	Waterproof Rating	WET (IP65)		
<b>OTHERS</b>	Operating Temperature	Without Sensor:-40 °C O45°C,With Sensor :-25 °C TO 50 °C		
	Storage Temperature	-40°C TO 85°C		
	Operating Humidity	20% - 90% RH		
	Storage Humidity	10% - 95% RH		
	Warranty	5 years		

# LED Semi-Cutoff Wall Pack

## PACKAGE

	Carton Size	Qty / Carton	Net Weight / Carton	Gross Weight / Carton
Outer box	383*270*165MM [15.08*10.63*6.50 inch]	1 PC	3.4KG [7.48 LBS]	4.3KG [9.46 LBS]

Tolerance of Carton Size: ±15 mm [±0.59 inch], Tolerance of Weight: ±10%.



## LIGHT DISTRIBUTION TESTING PARAMETERS

### Luminaire Property

Luminaire Manufacturer:  
Luminaire Category:  
Lamp Catalog:  
Number of Lamps:  
Luminous Length (mm):  
Luminous Height (mm):  
Current: 0.663 A  
Power Factor: 0.998

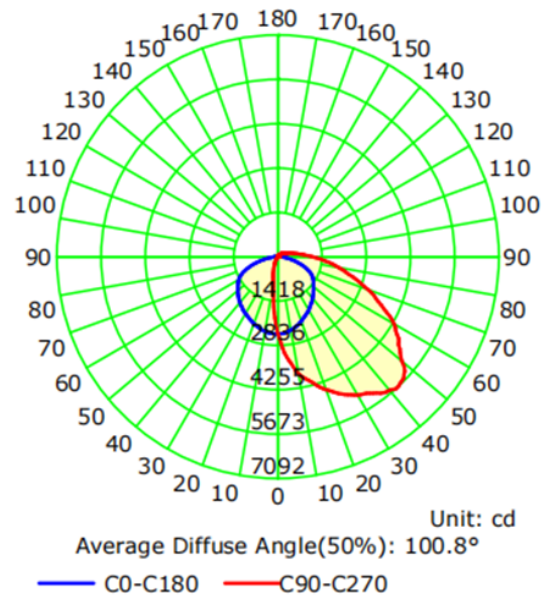
Luminaire Description:  
Lamp Description:  
Lumens per Lamp:  
Luminous Width (mm):  
Voltage: 120.0 V  
Power: 79.46 W

### Photometric Results

IES Classification: Type IV  
Total Rated Lamp Lumens: 10320.5 lm  
Efficiency: 100%  
Upward Ratio: 7%  
C0r0 Intensity: 2471 cd  
Pos of Max. Intensity: H90 V42  
Beam Angle(C0/C180,C90/C270,C45/C225,C135/315): 127.2, 74.3, 75.3, 75.2

Longitudinal Classification: Very Short  
Measurement Flux: 10320.5 lm  
Downward Ratio: 93%  
Luminaire Efficacy Rating (LER): 129.93  
Max. Intensity: 5673.87 cd

Luminous Intensity Distribution Curve



# LED Semi-Cutoff Wall Pack

## LIGHT DISTRIBUTION TESTING PARAMETERS

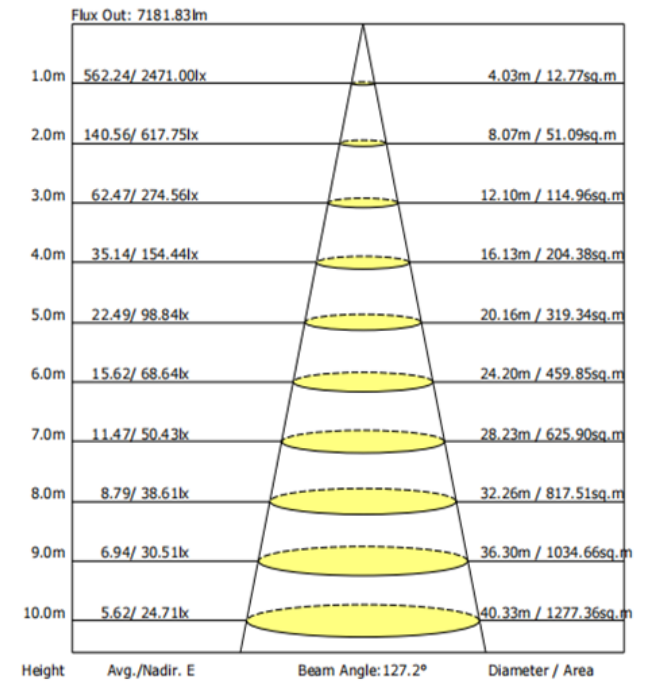
### NOTICE FOR USER

- Please turn off power before install or change assembly parts.
- The input voltage and lamps should be matched, after connecting the power line,
- Please make sure the wiring section is insulated.
- No-professionals, must not install and disassemble the lamps.

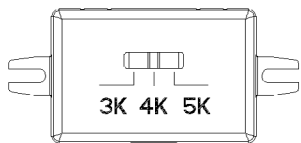
### TROUBLE SHOOTINGS

Troubles	Check points
Flickering of the light	Turn off the power and turn on again in 3 minutes. If same phenomena occur, then call agencies.
Out of working	Please check the connection.

### The Average Illuminance Effective Figure



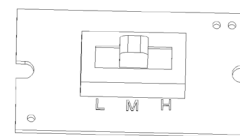
### SPECIAL FUNCTIONS INSTRUCTION:



#### Color tunable instruction

- 1, The color temperature of the lamp turns to 3000K when the switch is set to 3K;
- 2, The color temperature of the lamp turns to 4000K when the switch is set to 4K;
- 3, The color temperature of the lamp turns to 5000K when the switch is set to 5K;

**Note:** Please turn off the power before adjusting the color temperature.



#### Wattage adjustable instruction

Turn the wattage adjustable knob to a certain wattage gear, the power of the lamp

will change to the corresponding wattage.

Adjustable wattage range 25%-100%.

**Note:** Please turn off the power before adjusting the wattage.