



## Area Light Series

### 3-Power Selectable + 3 Color Selectable

Light up your outdoor area with the new Inergy Solutions Area Light Series, our latest line of Area Light fixtures with high lumen per watt efficacy combined with a stunning finish. The Inergy Solutions area flood lights are equipped with a die-cast aluminum housing, finished with a matte bronze powder coat paint, and anti-corrosion priming. Our Area Light series are available in a trunnion, yoke, slip fitter, or straight arm mount. Enjoy lighting up your outdoor area with over 140- 145lm/w+ efficiency.



Mounting Options

Project :

Type :

Part#:

## IS Area Series

### Detail Specifications:

- Average life (L70) of 70,000 hours with the integration of Philips Lumileds 3030 chips
- Operating temperature -40 ~ 122 F°
- PF >0.9 / Input: .85A/ Output: 36-66V DC
- Built-in 10kv surge protector

### Applications:

- General outdoor lighting
- Landscape lighting
- Pathways, streets, loading areas, etc.
- Stadium lighting
- Ideal for exceptional lighting in car dealerships

### Product Information:

- Area Light Gen 1 and Shoebox Fixtures combined into one
- Sturdy die-cast aluminum housing finished with corrosion free powder coat
- Suitable for wet location, professionally waterproofed IP67
- Type III optics standard/ Type I, II, IV, & V by request
- Slim and architectural fixture
- 1.5ft power cable cord provided
- 7 year limited warranty (refer to website for more info)

### Certifications:

- UL Listed for USA and CA
- DLC Listed
- CA T24 Compliant

| Product | Watts | Color | Finish | Bracket | Voltage | Optics | Options | Accessories |
|---------|-------|-------|--------|---------|---------|--------|---------|-------------|
| ISARL   | -     | CS3   | -      | -       | -       | -      | -       | -           |

| 1) Product             | 2) Watts  | 3) Color                           | 4) Finish  | 5) Bracket   | 6) Voltage   | 7) Optics   | 8) Options   | 9) Access.  |
|------------------------|---|------------------------------------|--|--|--|---|--|---|
| ISARL Large Area Light | <b>3WS100</b> 60W 8,700lm<br>80W 11,600lm<br>100W 14,500lm<br><b>3WS150</b> 120W 17,400lm<br>135W 19,575lm<br>150W 21,750lm<br><b>3WS240</b> 180W 26,100lm<br>210W 30,450lm<br>240W 34,800lm<br><b>3WS300</b> 260W 37,700lm<br>280W 40,600lm<br>300W 43,500lm | <b>CS3</b> 3000K<br>4000K<br>5000K | <b>BZ</b> Bronze*<br><b>BLK</b> Black<br><b>WH</b> White<br><b>GY</b> Grey<br><b>CS</b> Custom | <b>YK</b> Yoke<br><b>TR</b> Trunnion<br><b>SF</b> Slip Fitter<br><b>SA</b> Straight Arm<br><b>SFA</b> Slip Fitter and Straight Arm | <b>UNV</b> 100-277V<br><b>HV*</b> 277-480V<br><br>* only available for the 3P150 and 3P300 model | <b>II</b> Type II<br><b>III</b> Type III (Standard)<br><b>IV</b> Type IV<br><b>V</b> Type V | <b>(Blank)</b> None<br><b>BMS</b> Daylight + Bi-Level Motio Sensor Combo (Internal)<br><b>PC</b> Photocell 120-277V<br><b>PCHV</b> Photocell 347-480V<br><b>BT</b> Bluetooth | <b>(Blank)</b> None<br><br><b>HSS</b> House Side Shield |

## Area Light Series

3-Power Selectable + 3 Color Selectable



**Yoke**

- Flood light bracket
- Ideal use on a wall
- Adjustable design to angle area light luminaire



**Trunnion**

- Flood light bracket
- Ideal use on a wall
- Can be used for shoebox
- Adjustable design to angle area light luminaire



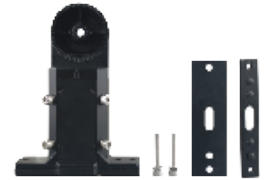
**Straight Arm Adjustable**

- Shoebox fixture bracket
- For use with round or square poles
- Can be used for shoebox
- Adjustable design to angle area light luminaire



**Slip Fitter**

- Shoebox fixture bracket
- For use with round or square poles
- Adjustable design to angle area light luminaire
- Inner diameter of 2.5" to fit 2-2.4" poll

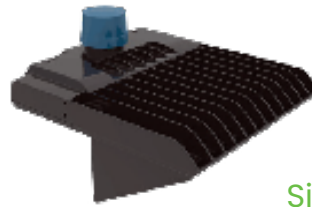


**Slip Fitter & Straight Arm**

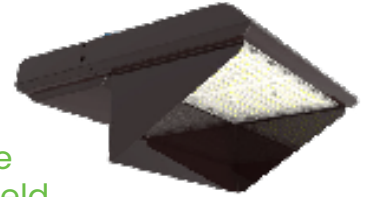
- Flood light bracket
- For use with round or square poles
- Can be used for shoebox
- Adjustable design to angle area light luminaire

### OPTICAL LENS

| Accessory Model | Accessory Description      |
|-----------------|----------------------------|
| ISARL-OPTICS-II | ISARL TYPE II OPTICAL LENS |
| ISARL-OPTICS-IV | ISARL TYPE IV OPTICAL LENS |
| ISARL-OPTICS-V  | ISARL TYPE V OPTICAL LENS  |

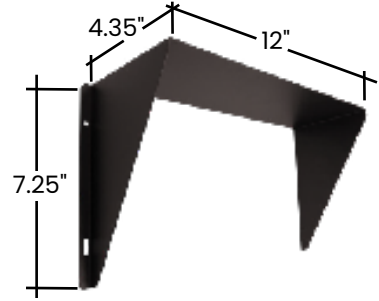


**House Side Shield**

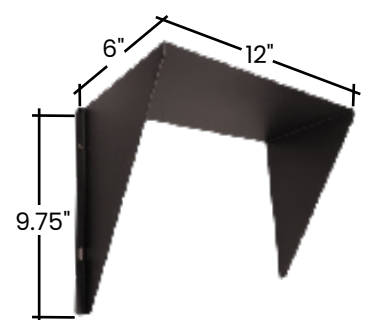


### PHOTO CONTROL

| Accessory Model | Accessory Description  |
|-----------------|--|
| PC-TWL-HV       | LC4535INT 3PIN LOCKING TYPE THERMAL PHOTO CONTROL 480V INTERMATIC  |
| PC-TWL-UNV      | JL207C 3PIN LOCKING TYPE THERMAL PHOTO CONTROL 120-277V INTERMATIC |
| K121INT         | 3 PIN RECEPTACLE   |
| K171H           | 7 PIN RECEPTACLE   |
| ISSHORTCAP-3    | 3 PIN SHORTING CAP   |



**ISARL-100/150W-SHIELD-BZ**



**ISARL-240/300W-SHIELD-BZ**

### SENSORS

| Accessory Model | Accessory Description  |
|-----------------|--|
| TWC-DL          | TWIST-C DAYLIGHT SENSOR (ALTERNATIVE FOR PHOTOCELL)              |
| TWC-PIR-BT      | TWIST-C PIR SENSOR BLUETOOTH (APP CONTROLLED)                    |
| TWC-MW-BT       | TWIST-C MICROWAVE SENSOR BLUETOOTH (APP CONTROLLED)              |
| TWC-PIR-1       | TWIST-C PIR SENSOR   |
| TWC-PIR-2       | TWIST-C PIR SENSOR DAYLIGHT CAPABLE                              |
| TWC-MW-1        | TWIST-C MICROWAVE SENSOR   |
| TWC-MW-2        | TWIST-C MICROWAVE SENSOR DAYLIGHT CAPABLE (SIMILAR TO HB01DMS-A) |



**TWC**  
Alternative for Photo Cell Sensor



**Optic Lenses**  
100 / 150W 1 Pieces Required  
240 / 300W 2 Pieces Required



**3 Pin Photocell**  
120-277V



**3 Pin Photocell**  
120-277V



**3 Pin Photocell**  
120-277V



**3 Pin Photocell**  
120-277V



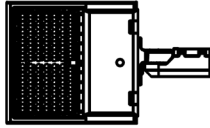
**3 Pin Photocell**  
120-277V

## Area Light Series

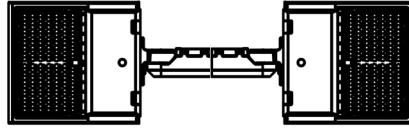
3-Power Selectable + 3 Color Selectable

### Mounting Configuration

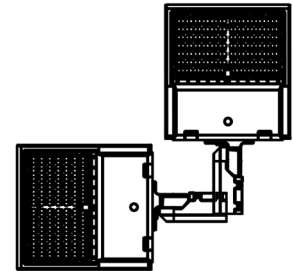
#### 3WS100-3WS200



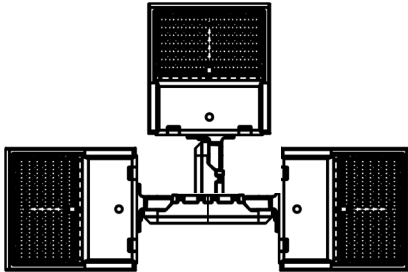
S Single  
EPA: 0.55  
Weight: 13.2 lbs



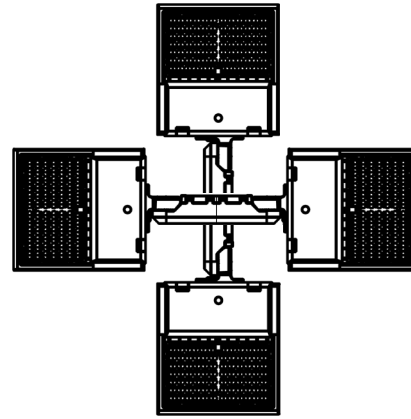
D180 Double 180°  
EPA: 1.1  
Weight: 26.4 lbs



D90 Double 90°  
EPA: 0.72  
Weight: 26.4 lbs

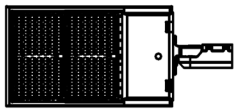


T90 Triple 90°  
EPA: 1.1  
Weight: 39.6 lbs

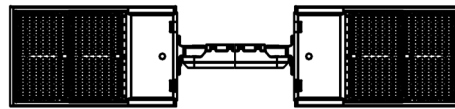


Q90 Quad 90°  
EPA: 1.1  
Weight: 52.8 lbs

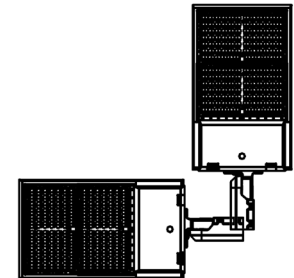
#### 3WS240-3WS300



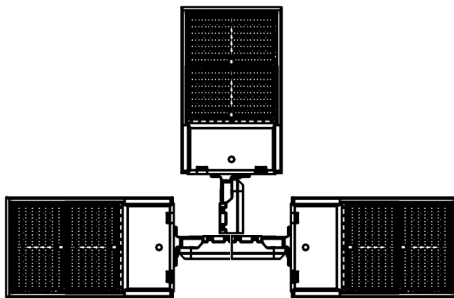
S Single  
EPA: 0.75  
Weight: 18.2 lbs



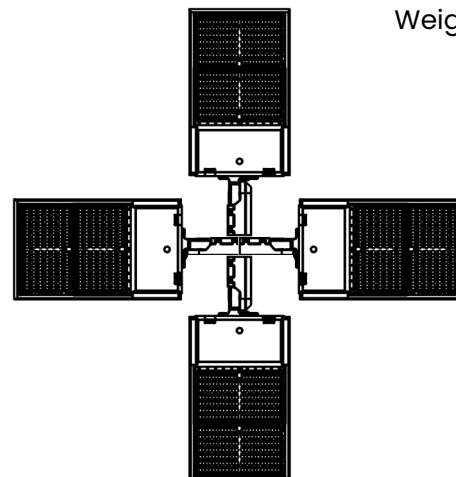
D180 Double 180°  
EPA: 1.5  
Weight: 36.4 lbs



D90 Double 90°  
EPA: 0.92  
Weight: 36.4 lbs



T90 Triple 90°  
EPA: 1.5  
Weight: 56.4 lbs

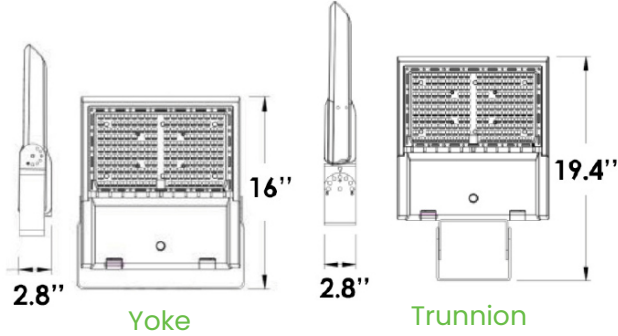


Q90 Quad 90°  
EPA: 1.5  
Weight: 72.8 lbs.

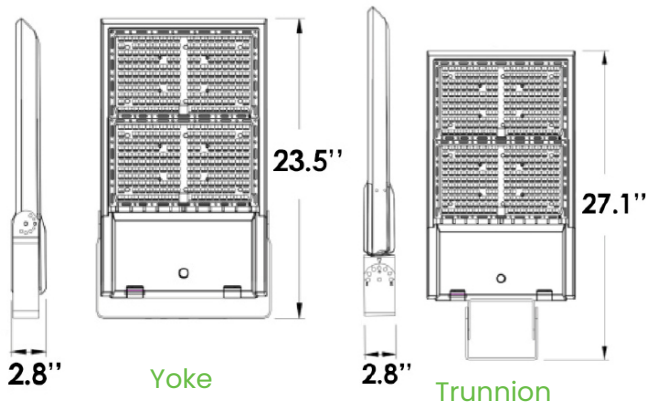
## Area Light Series

3-Power Selectable + 3 Color Selectable

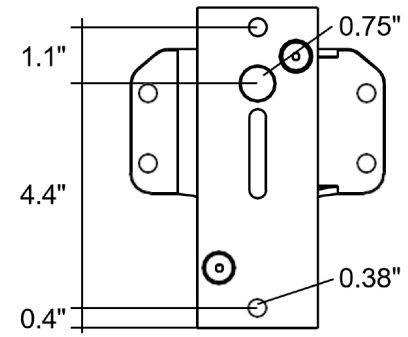
### 100/150W Dimensions



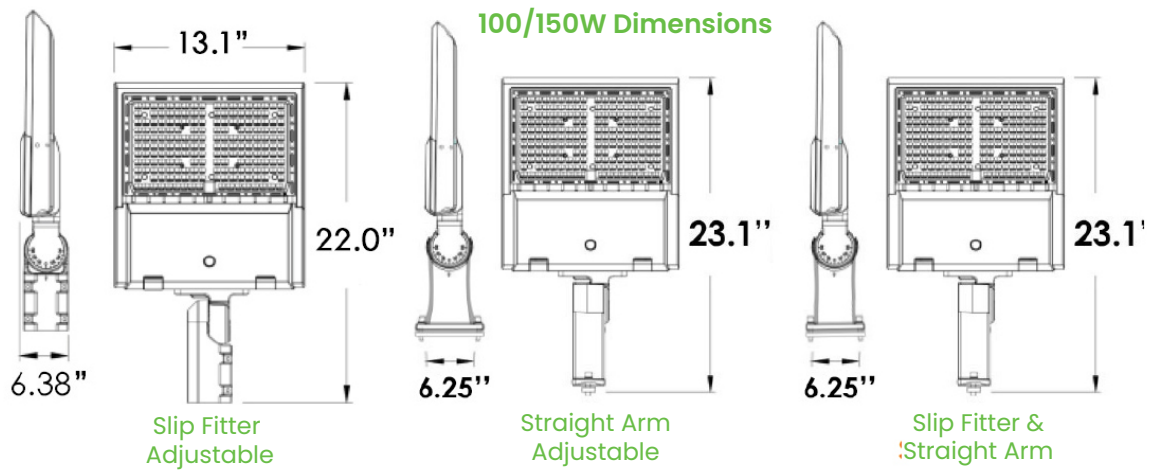
### 240/300W Dimensions



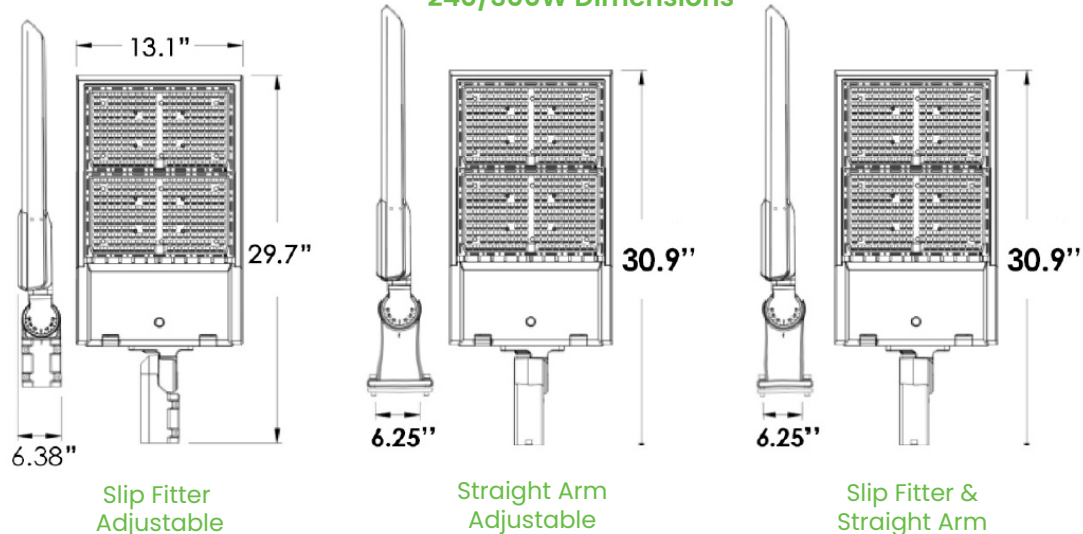
### Drill Pattern for SFA/SA



### 100/150W Dimensions



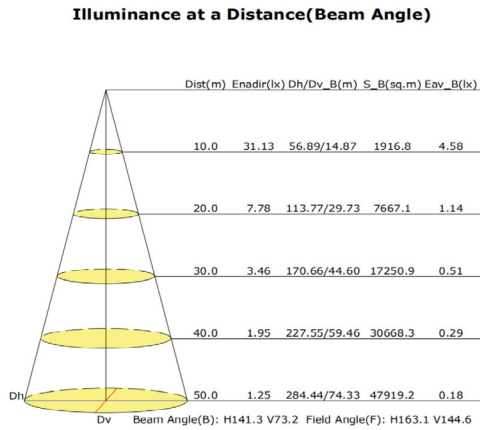
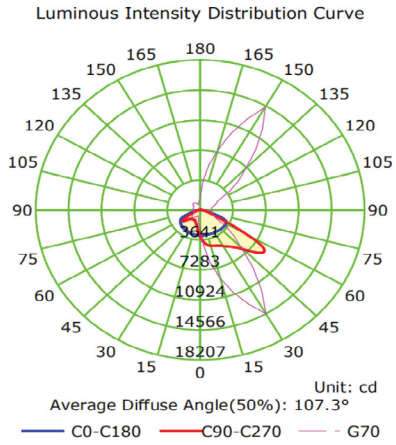
### 240/300W Dimensions



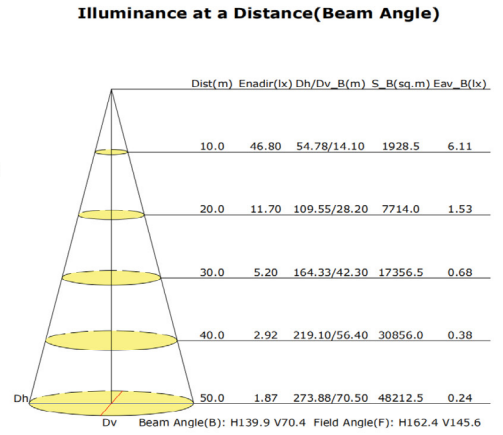
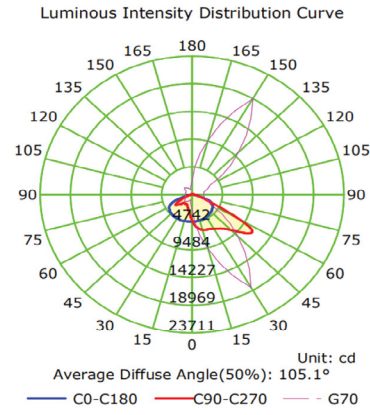
# Area Light Series

3-Power Selectable + 3 Color Selectable

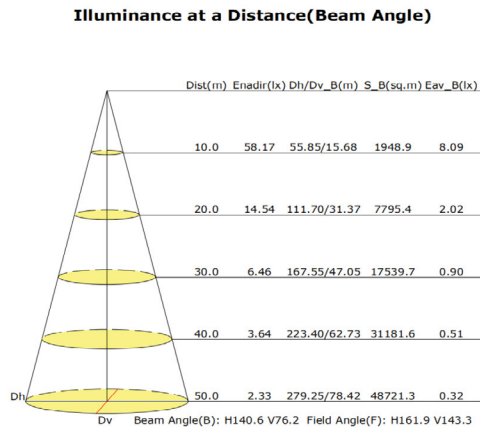
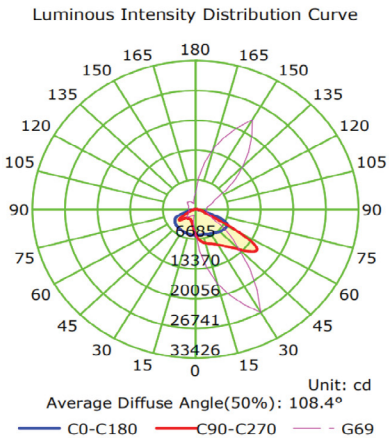
## PHOTOMETRICS



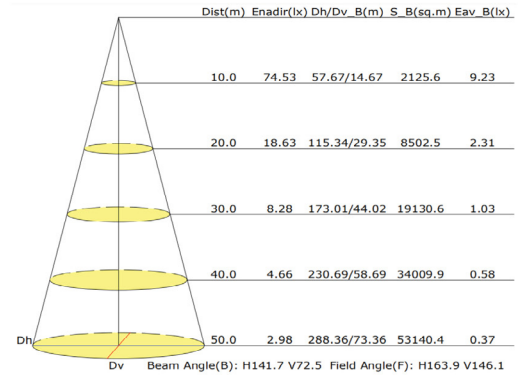
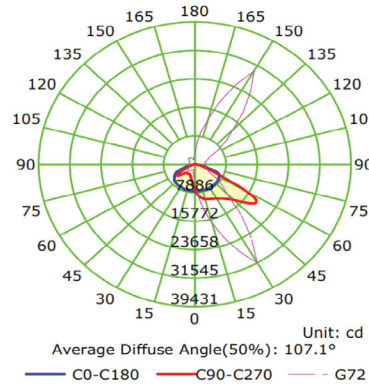
120W



150W & 185W



240W



300W